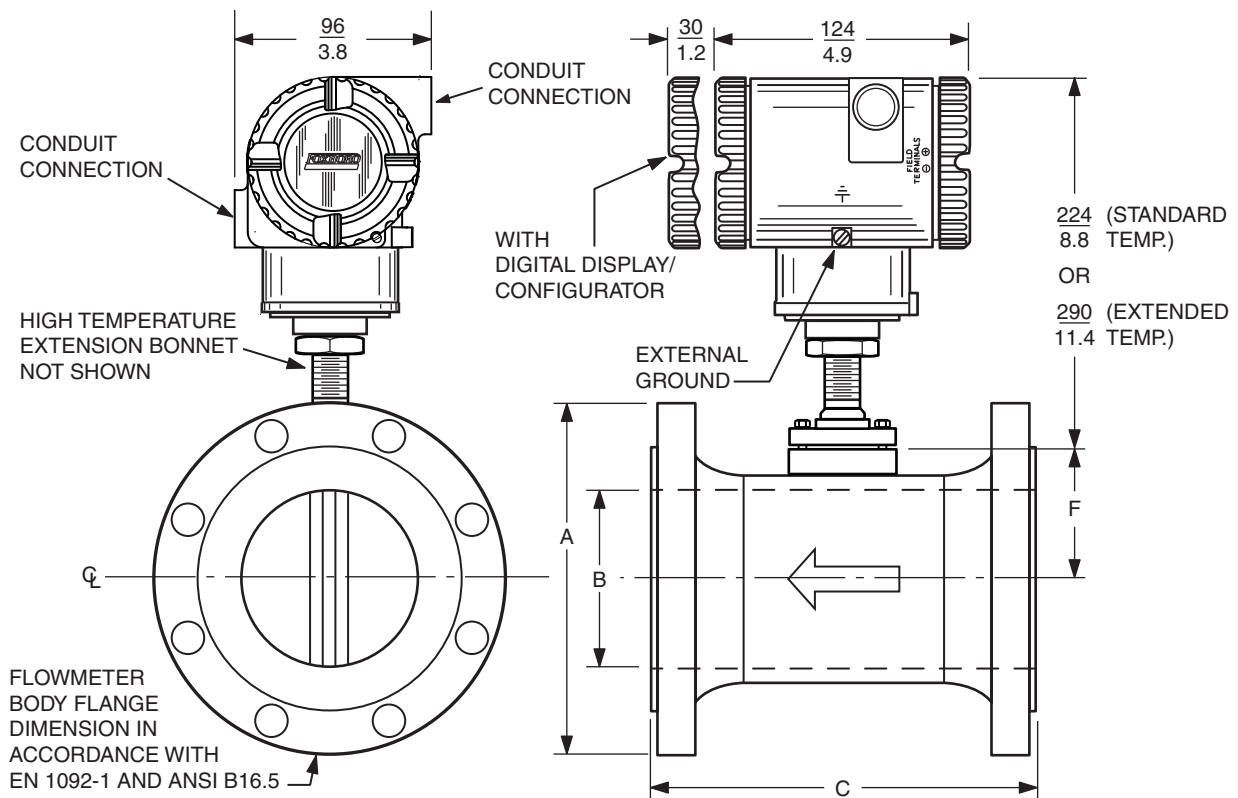


Foxboro® Model 84C Vortex Flowmeters

84C Flanged and Wafer Body – Single Measurement Configuration

84C FLANGED BODY FLOWMETER WITH INTEGRALLY MOUNTED ELECTRONICS



For Dimensions A, B, C, and F, refer to Table 1 through Table 3.

For dimensional information specific to your sales order, contact your sales representative to order a Certified Dimensional Print (CDP).

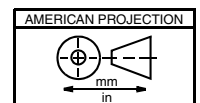


Table 1. 84C Flanged Body Single Measurement Configuration With ANSI Flanges and Integral Housing; Body, Flange, and Shedder Bar Material Model Code Selections R and E

| Nominal Line Size | Flange Type | Dimensions in inches | | | | |
|-------------------|-------------|----------------------|----------|--------------|---------------|------|
| | | A (O.D.) | B (I.D.) | C (a) (b) RF | C (a) (b) RTJ | F |
| 3/4 in (a) | Class 150 | 3.88 | 0.74 | 6.56 | -- | 1.82 |
| | Class 300 | 4.62 | 0.74 | 6.94 | 7.32 | 1.82 |
| | Class 600 | 4.62 | 0.74 | 7.44 | 7.44 | 1.82 |
| | Class 900 | 5.12 | 0.74 | 8.44 | 8.44 | 1.82 |
| | Class 1500 | 5.12 | 0.74 | 8.44 | 8.44 | 1.82 |
| 1 in (a) | Class 150 | 4.25 | 0.96 | 6.80 | 7.18 | 1.93 |
| | Class 300 | 4.88 | 0.96 | 7.32 | 7.70 | 1.93 |
| | Class 600 | 4.88 | 0.96 | 7.82 | 7.82 | 1.93 |
| | Class 900 | 5.88 | 0.96 | 8.7 | 8.70 | 1.93 |
| | Class 1500 | 5.88 | 0.96 | 8.7 | 8.70 | 1.93 |
| 1 1/2 in (a) | Class 150 | 4.62 | 1.50 | 7.32 | 7.70 | 2.20 |
| | Class 300 | 6.12 | 1.50 | 7.82 | 8.20 | 2.20 |
| | Class 600 | 6.12 | 1.50 | 8.44 | 8.44 | 2.20 |
| | Class 900 | 7.00 | 1.50 | 9.44 | 9.44 | 2.20 |
| | Class 1500 | 7.00 | 1.50 | 9.44 | 9.44 | 2.20 |
| 2 in (a) | Class 150 | 6.00 | 1.94 | 7.75 | 8.13 | 2.32 |
| | Class 300 | 6.50 | 1.94 | 8.25 | 8.75 | 2.32 |
| | Class 600 | 6.50 | 1.94 | 9.01 | 9.13 | 2.32 |
| | Class 900 | 8.50 | 1.94 | 11.25 | 11.37 | 2.32 |
| | Class 1500 | 8.50 | 1.69 | 11.25 | 11.37 | 2.20 |
| 3 in (a) | Class 150 | 7.50 | 2.87 | 8.88 | 9.26 | 2.75 |
| | Class 300 | 8.25 | 2.87 | 9.62 | 10.12 | 2.75 |
| | Class 600 | 8.25 | 2.87 | 10.38 | 10.50 | 2.75 |
| | Class 900 | 9.50 | 2.87 | 11.88 | 12.00 | 2.75 |
| | Class 1500 | 10.50 | 2.63 | 13.12 | 13.25 | 2.62 |
| 4 in (a) | Class 150 | 9.00 | 3.83 | 9.62 | 10.00 | 3.35 |
| | Class 300 | 10.00 | 3.83 | 10.38 | 10.88 | 3.35 |
| | Class 600 | 10.75 | 3.83 | 12.12 | 12.24 | 3.35 |
| | Class 900 | 11.50 | 3.83 | 13.12 | 13.24 | 3.35 |
| | Class 1500 | 12.25 | 3.44 | 13.88 | 14.00 | 3.35 |
| 6 in (a) | Class 150 | 11.00 | 5.76 | 12.00 | 12.38 | 4.42 |
| | Class 300 | 12.50 | 5.76 | 12.76 | 13.26 | 4.42 |
| | Class 600 | 14.00 | 5.76 | 14.74 | 14.86 | 4.42 |
| | Class 900 | 15.00 | 5.19 | 16.5 | 16.62 | 4.42 |
| | Class 1500 | 15.50 | 5.19 | 19.00 | 19.25 | 4.42 |
| 8 in (a) | Class 150 | 13.50 | 7.63 | 15.00 | 15.38 | 5.47 |
| | Class 300 | 15.00 | 7.63 | 15.75 | 16.26 | 5.47 |
| | Class 600 | 16.50 | 7.63 | 18.00 | 18.12 | 5.47 |
| | Class 900 | 18.50 | 6.81 | 20.26 | 20.38 | 5.47 |
| | Class 1500 | 19.00 | 6.81 | 24.26 | 24.64 | 5.47 |
| 10 in (a) | Class 150 | 16.00 | 9.56 | 15.00 | 15.38 | 6.55 |
| | Class 300 | 17.50 | 9.56 | 16.24 | 16.74 | 6.55 |
| | Class 600 | 20.00 | 9.56 | 19.5 | 19.62 | 6.55 |

Table 1. 84C Flanged Body Single Measurement Configuration With ANSI Flanges and Integral Housing; Body, Flange, and Shedder Bar Material Model Code Selections R and E (Continued)

| Nominal Line Size | Flange Type | Dimensions in inches | | | | |
|-------------------|-------------|----------------------|----------|--------------|---------------|------|
| | | A (O.D.) | B (I.D.) | C (a) (b) RF | C (a) (b) RTJ | F |
| 12 in (b) | Class 150 | 19.00 | 11.37 | 17.00 | 17.38 | 7.55 |
| | Class 300 | 20.50 | 11.37 | 18.24 | 18.74 | 7.55 |
| | Class 600 | 22.00 | 11.37 | 20.74 | 20.76 | 7.55 |

- a. For 3/4 inch through 10 inch nominal line sizes, the overall length "C" is ± 0.250 in (± 6.4 mm).
b. For 12 inch nominal line sizes, the overall length "C" is ± 0.350 in (± 8.9 mm).

Table 2. 84C Flanged Body Single Measurement Configuration With DIN Flanges and Integral Housing; Body, Flange, and Shedder Bar Material Model Code Selections R and E

| Nominal Line Size | Flange Type | Dimensions in mm | | | |
|-------------------|-------------|------------------|----------|-----------|--------|
| | | A (O.D.) | B (I.D.) | C (a) (b) | F |
| 15 mm (a) | PN 40 (c) | 95.00 | 18.80 | 138.00 | 46.20 |
| | PN 100 | 105.00 | 18.80 | 152.00 | 46.20 |
| 25 mm (a) | PN 40 (c) | 115.00 | 24.31 | 142.00 | 49.00 |
| | PN 100 | 140.00 | 24.31 | 178.00 | 49.00 |
| | PN 160 | 140.00 | 24.31 | 178.00 | 49.00 |
| 40 mm (a) | PN 40 (c) | 150.00 | 38.10 | 152.00 | 55.90 |
| | PN 100 | 170.00 | 38.10 | 186.00 | 55.90 |
| | PN 160 | 170.00 | 38.10 | 190.00 | 55.90 |
| 50 mm (a) | PN 40 (c) | 165.00 | 49.20 | 166.00 | 58.90 |
| | PN 63 | 180.00 | 49.20 | 194.00 | 58.90 |
| | PN 100 | 195.00 | 49.20 | 206.00 | 58.90 |
| | PN 160 | 195.00 | 49.20 | 220.00 | 58.90 |
| 80 mm (a) | PN 40 (c) | 200.00 | 72.90 | 202.00 | 69.90 |
| | PN 63 | 215.00 | 72.90 | 230.00 | 69.90 |
| | PN 100 | 230.00 | 72.90 | 242.00 | 69.90 |
| | PN 160 | 230.00 | 72.90 | 258.00 | 69.90 |
| 100 mm (a) | PN 40 (c) | 235.00 | 97.18 | 222.00 | 85.10 |
| | PN 63 | 250.00 | 97.18 | 248.00 | 85.10 |
| | PN 100 | 265.00 | 97.18 | 272.00 | 85.10 |
| | PN 160 | 265.00 | 97.18 | 292.00 | 85.10 |
| 150 mm (a) | PN 16 | 285.00 | 146.30 | 237.00 | 112.30 |
| | PN 40 (c) | 300.00 | 146.30 | 277.00 | 112.30 |
| | PN 63 | 345.00 | 146.30 | 317.00 | 112.30 |
| | PN 100 | 355.00 | 146.30 | 357.00 | 112.30 |
| | PN 160 | 355.00 | 131.80 | 383.00 | 112.30 |
| 200 mm (a) | PN 16 | 340.00 | 193.68 | 302.00 | 138.90 |
| | PN 25 | 360.00 | 193.68 | 338.00 | 138.90 |
| | PN 40 | 375.00 | 193.68 | 354.00 | 138.90 |
| | PN 63 | 415.00 | 193.68 | 398.00 | 138.90 |
| | PN 100 | 430.00 | 193.68 | 438.00 | 138.90 |
| | PN 160 | 430.00 | 173.05 | 458.00 | 138.90 |

Table 2. 84C Flanged Body Single Measurement Configuration With DIN Flanges and Integral Housing; Body, Flange, and Shedder Bar Material Model Code Selections R and E (Continued)

| Nominal Line Size | Flange Type | Dimensions in mm | | | |
|-------------------|-------------|------------------|----------|-----------|--------|
| | | A (O.D.) | B (I.D.) | C (a) (b) | F |
| 250 mm (a) | PN 16 | 405.00 | 242.87 | 318.00 | 166.40 |
| | PN 25 | 425.00 | 242.87 | 354.00 | 166.40 |
| | PN 40 | 450.00 | 242.87 | 388.00 | 166.40 |
| | PN 63 | 470.00 | 242.87 | 428.00 | 166.40 |
| | PN 100 | 505.00 | 242.87 | 492.00 | 166.40 |
| 300 mm (b) | PN 16 | 460.00 | 288.90 | 359.00 | 191.80 |
| | PN 25 | 485.00 | 288.90 | 387.00 | 191.80 |
| | PN 40 | 515.00 | 288.90 | 433.00 | 191.80 |
| | PN 63 | 530.00 | 288.90 | 483.00 | 191.80 |
| | PN 100 | 585.00 | 288.90 | 543.00 | 191.80 |

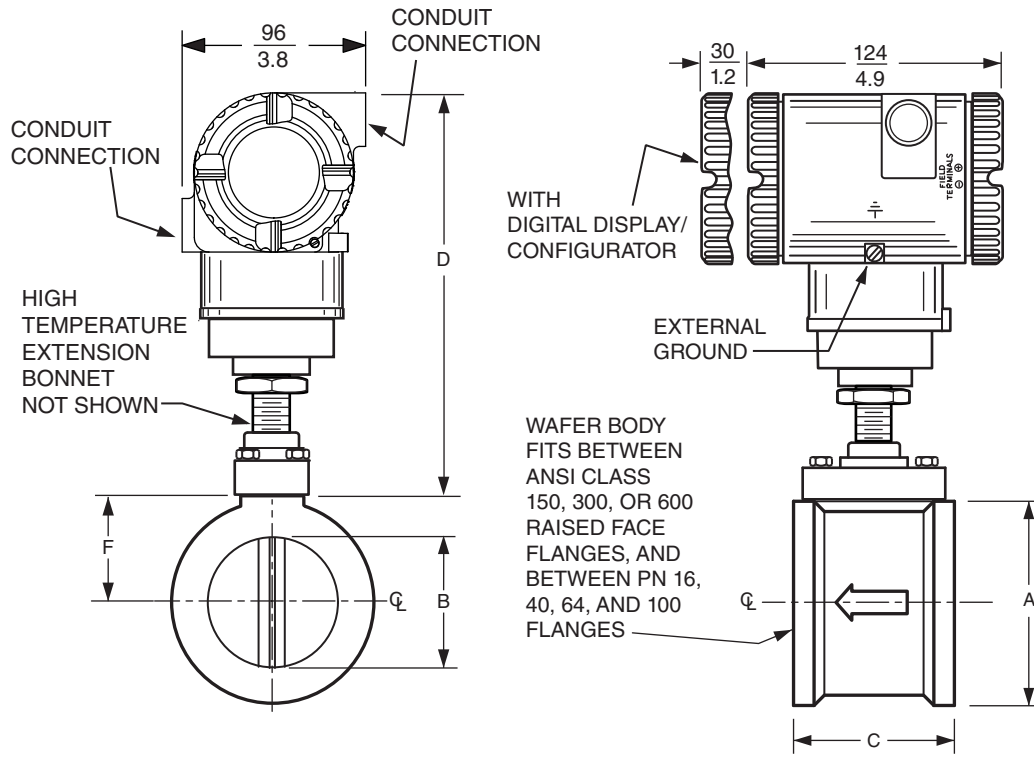
- a. For 15 mm through 250 mm nominal lines sizes, the overall length “C” is ±6.4 mm (±0.250 in).
- b. For 300 mm nominal line sizes, the overall length “C” is ±8.9 mm (±0.350 in).
- c. May be used with PN 25 mating flange.

Table 3. 84C Flanged Body Single Measurement Configuration With ANSI Flanges and Integral Housing; Body, Flange, and Shedder Bar Material Model Code Selection Y; Backward Compatible with Style A (a)

| (Note: These versions should only be used when replacing a Model 84F Style A meter or for stocking purposes for Model 84F Style A meters.) | | | | | | |
|--|---------------|----------------------|----------|-------|------|------|
| Nominal Line Size | Flange Rating | Dimensions in inches | | | | |
| | | A (O.D.) | B (I.D.) | C (b) | F | |
| 3/4 in | Class 150 | 3.88 | 0.74 | 6.00 | 1.82 | |
| | Class 300 | 4.62 | 0.74 | 6.00 | | |
| | Class 600 | 4.62 | 0.74 | 6.50 | | |
| 1 in | Class 150 | 4.25 | 0.96 | 6.50 | 1.93 | |
| | Class 300 | 4.88 | 0.96 | 6.50 | | |
| | Class 600 | 4.88 | 0.96 | 7.00 | | |
| 1 1/2 in | Class 150 | 4.62 | 1.50 | 7.25 | 2.20 | |
| | Class 300 | 6.12 | 1.50 | 7.25 | | |
| | Class 600 | 6.12 | 1.50 | 7.88 | | |
| 2 in | Class 150 | Not available | | | | 2.32 |
| | Class 300 | 6.50 | 1.94 | 7.75 | | |
| | Class 600 | 6.50 | 1.94 | 8.50 | | |
| 3 in | Class 150 | Not available | | | | 2.75 |
| | Class 300 | 8.25 | 2.87 | 8.75 | | |
| | Class 600 | 8.25 | 2.87 | 9.50 | | |
| 4 in | Class 150 | Not available | | | | 3.35 |
| | Class 300 | 10.00 | 3.83 | 9.50 | | |
| | Class 600 | 10.75 | 3.83 | 10.50 | | |

- a. Style B Vortex flowmeters with ANSI flanges contain a model code option for face-to-face lengths that are backward compatible with Style A Vortex flowmeters. Style B model code selection “Y” matches Style A model code selection “S”.
- b. Overall length “C” is ±0.250 in (±6.4 mm).

84C WAFER BODY FLOWMETER WITH INTEGRALLY MOUNTED ELECTRONICS



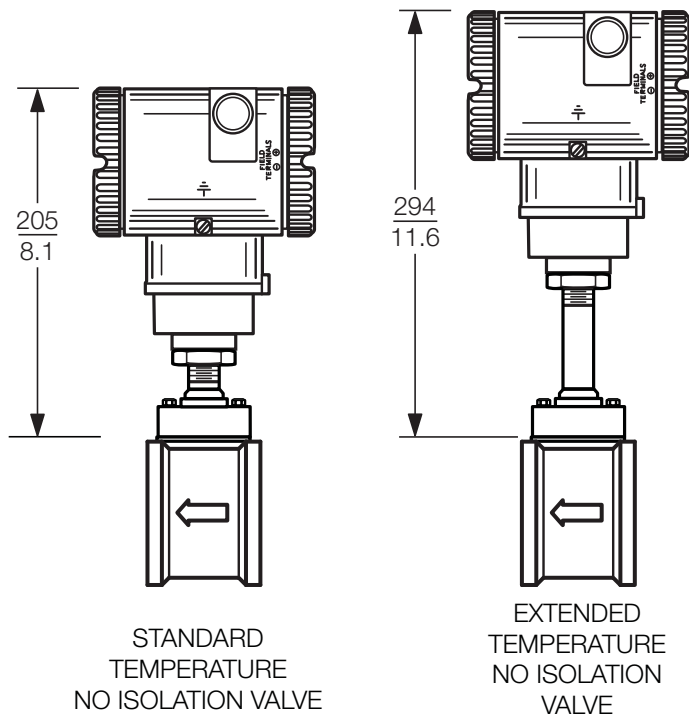
NOTE: SEE PAGE 6 FOR DIMENSIONS

**Table 4. 84C Wafer Body Flowmeter Dimensions (a)
With Integral Electronics Housing**

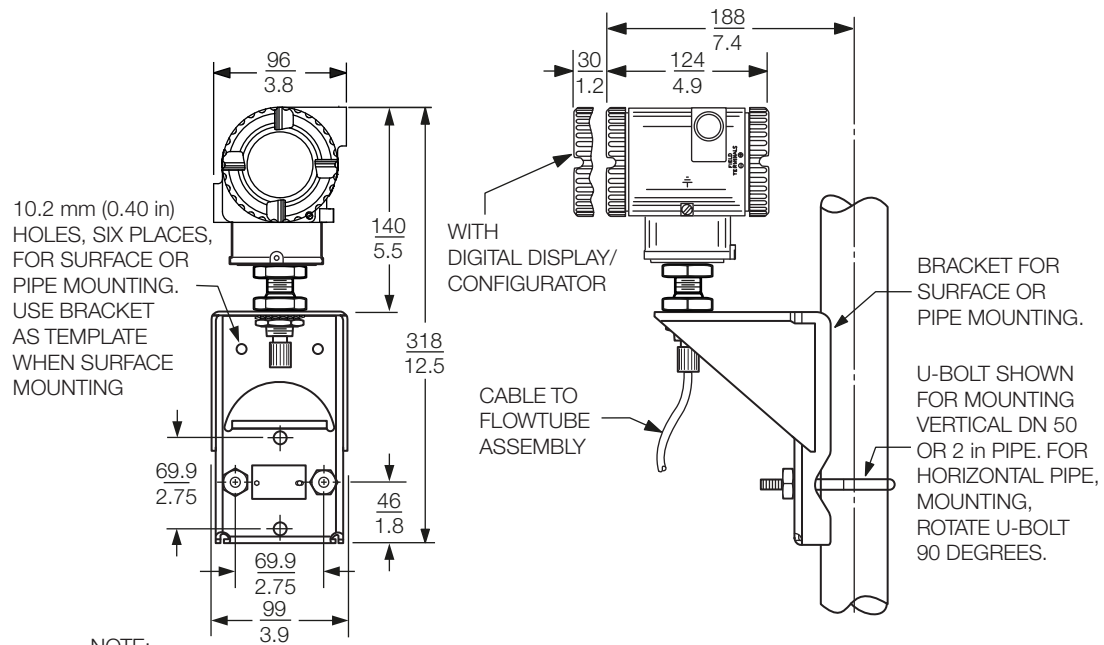
| Nominal Line Size | Dimensions: mm or in, as Applicable | | | | |
|-------------------|-------------------------------------|--------------------|--------------------|-------------------------|--------------------|
| | A (O.D.) | B (I.D.) (b) | C | D | F |
| 20 mm (3/4 in) | 57.2 mm (2.25 in) | 18.8 mm (0.74 in) | 79.5 mm (3.13 in) | See D Dimensions Below. | 36.6 mm (1.44 in) |
| 25 mm (1 in) | 66.8 mm (2.63 in) | 24.3 mm (0.96 in) | 79.5 mm (3.13 in) | | 39.4 mm (1.55 in) |
| 40 mm (1 1/2 in) | 85.9 mm (3.38 in) | 38.1 mm (1.50 in) | 79.5 mm (3.13 in) | | 46.2 mm (1.82 in) |
| 50 mm (2 in) | 104.6 mm (4.12 in) | 49.2 mm (1.94 in) | 79.5 mm (3.13 in) | | 49.3 mm (1.94 in) |
| 80 mm (3 in) | 136.7 mm (5.38 in) | 72.9 mm (2.87 in) | 95.3 mm (3.75 in) | | 60.2 mm (2.37 in) |
| 100 mm (4 in) | 174.5 mm (6.87 in) | 96.7 mm (3.81 in) | 120.7 mm (4.75 in) | | 73.9 mm (2.91 in) |
| 150 mm (6 in) | 222.3 mm (8.75 in) | 147.3 mm (5.80 in) | 177.8 mm (7.00 in) | | 98.0 mm (3.86 in) |
| 200 mm (8 in) | 279.4 mm (11.00 in) | 193.0 mm (7.60 in) | 228.6 mm (9.00 in) | | 122.9 mm (4.84 in) |

- a. Flowmeter body fits between ANSI Class 150, 300, or 600 raised face flanges and PN16, 40, 63, and 100 flanges.
- b. Bore equivalent to Schedule 80 pipe.

“D” DIMENSIONS



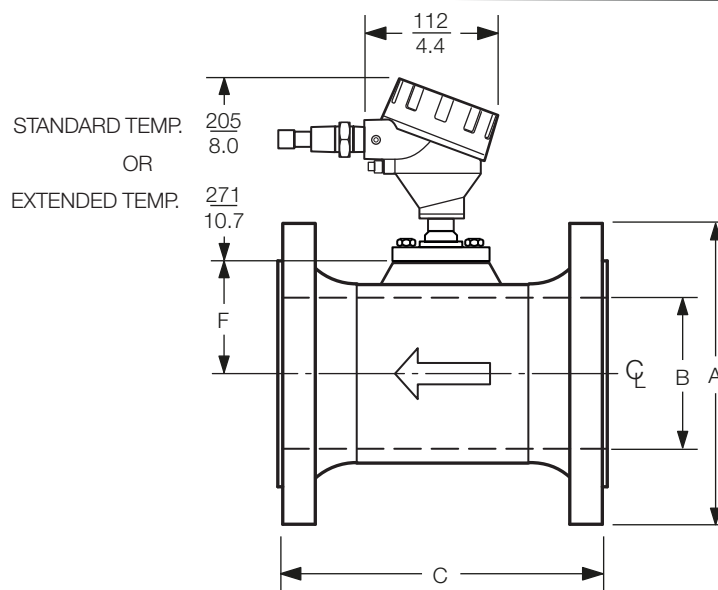
84C FLANGED BODY - REMOTELY MOUNTED ELECTRONICS HOUSING



NOTE:

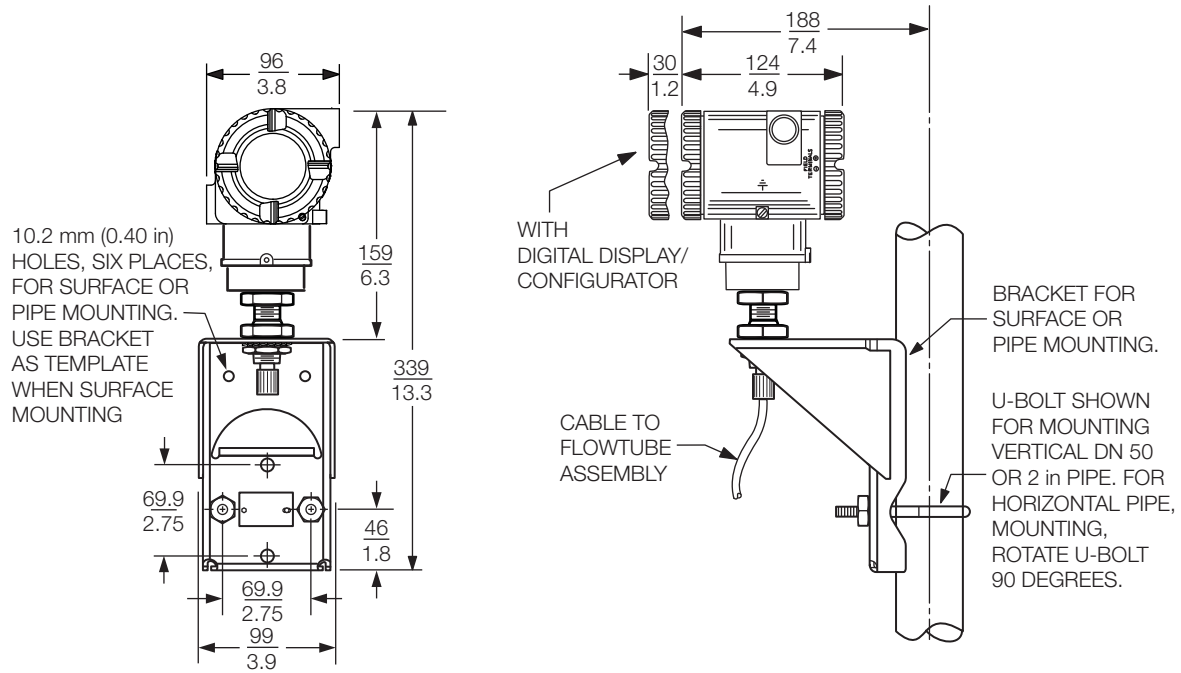
WHEN THE BRACKET IS USED FOR WALL MOUNTING, REPLACE U-BOLT WITH TWO (OR FOUR IF NECESSARY) 0.375 IN BOLTS OF SUFFICIENT LENGTH TO PASS THROUGH THE BRACKET AND SURFACE

84C FLANGED BODY - INTEGRAL JUNCTION BOX AND REMOTELY MOUNTED ELECTRONICS HOUSING



For Dimensions A, B, C, and F, refer to Table 1 through Table 3.

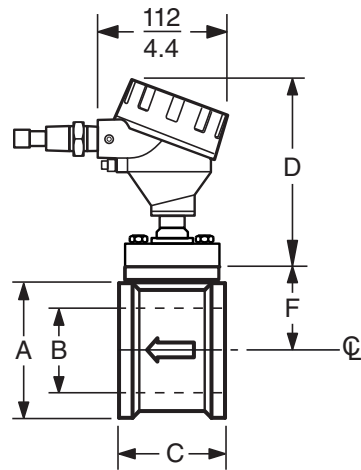
84C WAFER BODY - REMOTELY MOUNTED ELECTRONICS HOUSING



NOTE:

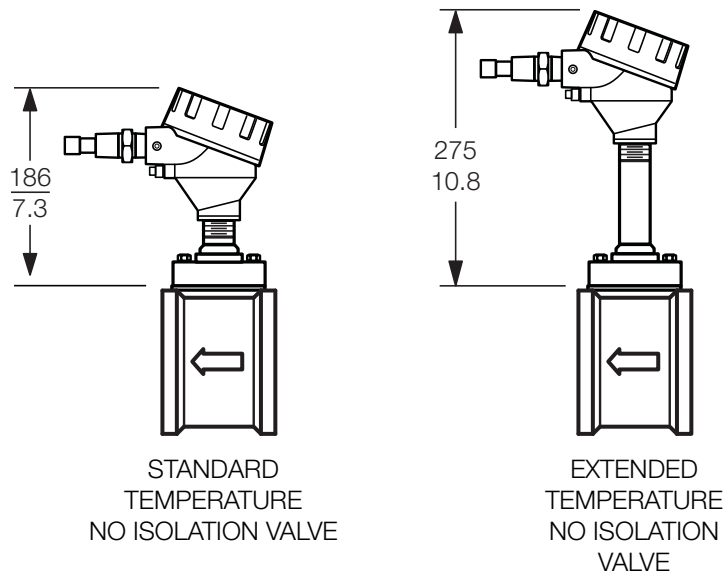
WHEN THE BRACKET IS USED FOR WALL MOUNTING, REPLACE U-BOLT WITH TWO (OR FOUR IF NECESSARY) 0.375 IN BOLTS OF SUFFICIENT LENGTH TO PASS THROUGH THE BRACKET AND SURFACE

84C WAFER BODY WITH INTEGRAL JUNCTION BOX
FOR REMOTELY MOUNTED ELECTRONICS



For Dimensions A, B, C, and F, refer to Table 4. Dimension D is below.

MODEL 84C WAFER BODY - "D" DIMENSIONS



Schneider Electric Systems USA, Inc.
38 Neponset Avenue
Foxboro, MA 02035
United States of America
<http://www.schneider-electric.com>

Global Customer Support
Inside U.S.: 1-866-746-6477
Outside U.S.: 1-508-549-2424
<https://pasupport.schneider-electric.com>

Copyright 2015-2018 Schneider Electric Systems USA, Inc. All rights reserved.

Schneider Electric, Foxboro, and I/A Series are trademarks of Schneider Electric Systems USA, Inc., its subsidiaries, and affiliates. All other trademarks are the property of their respective owners.

Life Is n

Foxboro[®]

by Schneider Electric