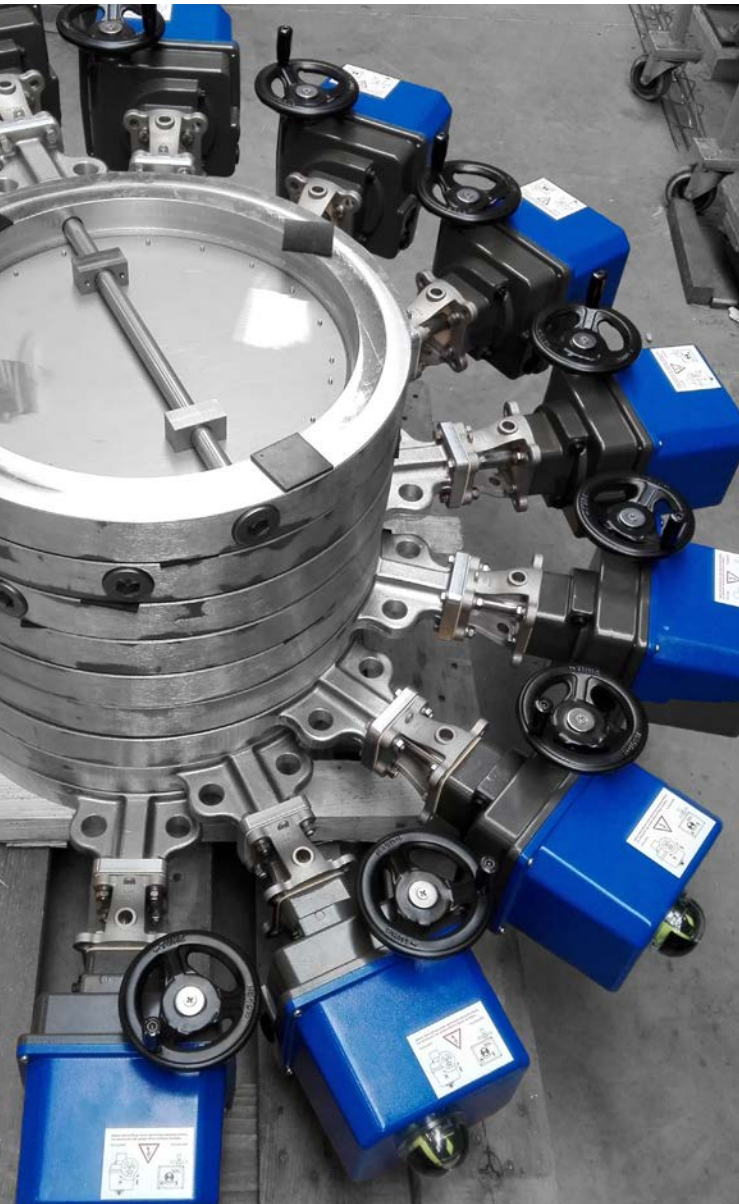


We care for actuation.



With Quality Comes Reliability

- ✓ Every single actuator is tested after assembling
- ✓ Gearbox is protected by metal housing
- ✓ Enclosure at least IP65

Innovation Ensures Progress

- ✓ Intelligent actuators suitable for fieldbus application
 - ✓ Fail-safe function based on supercapacitors

Our Flexibility = Your Advantage

- ✓ Actuators suitable for modulating application
 - ✓ For all common power supplies
 - ✓ Compact design with retrofittable features

QUARTER-TURN ACTUATORS

PS-AMS PSQ



Torque: 130 - 1.000 Nm
Operation Time: 9 - 140 s for 90°
Enclosure: IP67 or IP68 according to DIN EN 60529
Valid ambient temperature: -20 to +60°C

Intelligent Actuator with Options for Failsafe and Fieldbus Application

PSQ



Torque: 130 - 1.500 Nm
Operation Time: 8 - 120 s for 90°
Enclosure: IP67 or IP68 according to DIN EN 60529
Valid ambient temperature: -20 to +80°C (S2); -20 to +60°C (S4)

Tough All-rounder with Mechanical Torque Switches

PSQ-E



Torque: 100 - 150 Nm
Operation Time: 23 s for 90°
Enclosure: IP67 or IP68 according to DIN EN 60529
Valid ambient temperature: -25 to +70°C (S2); -20 to +60°C (S4)

Durable Industrial Actuator for On/Off Application

PSR-E



Torque: 25 - 50 Nm
Operation Time: 6 - 80 s for 90°
Enclosure: IP65 or IP67 according to DIN EN 60529
Valid ambient temperature: -25 to +70°C (S2); -20 to +60°C (S4)

Compact Entry-level Product for Industrial Requirements

PS-AMS PSQ-S



Torque: 60 - 200 Nm
Operation Time: 6 - 20 s for 90°
Enclosure: IP68 according to DIN EN 60529
Valid ambient temperature: -20 to +60°C

Next-generation Quarter-turn Actuator Designated for Industry 4.0

LINEAR ACTUATORS

Thrust: 1 - 25 kN
Velocity: 0,2 - 4,5 mm/s
Enclosure: IP65 or IP67 according to DIN EN 60529
Valid ambient temperature: -20 to +60°C

Linear Actuator for Demanding Control Applications



PS-AMS PSL

Thrust: 1 - 30 kN
Velocity: 0,25 - 1 mm/s
Enclosure: IP65 / IP67 / IP68 according to DIN EN 60529
Valid ambient temperature: -20 to +80° C (S2); -20 to +60° C (S4)

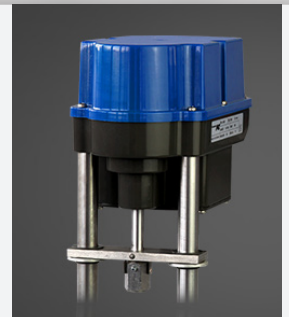
Durable Linear Valve Actuator



PSL

Thrust: 1 - 2 kN
Velocity: 0,3 – 1,2 mm/s
Enclosure: IP65 or IP67 according to DIN EN 60529
Valid ambient temperature: -10 to +60° C

Compact Actuator with Mechanical Fail-safe Function



PSF

Thrust: 1 - 2 kN
Velocity: 0,3 – 1,2 mm/s
Enclosure: IP65 or IP67 according to DIN EN 60529
Valid ambient temperature: -10 to +60° C

Parameterizable Actuator with Manual Override



PSF-M

Thrust: 1 - 2 kN
Velocity: 0,3 – 2,0 mm/s
Enclosure: IP65 according to DIN EN 60529
Valid ambient temperature: -10 to +40° C

With Mechanical Fail-safe Function and Ex d Approval



PSF-EX

We care for actuation.

*Designed,
engineered and
built in Germany
since 1989*

Specialist for Valve Actuation

At PS Automation, we produce a broad range of actuators in order to automate valves. For more than 30 years our adapted to your needs products care for actuation. What makes them so unique? They are robust, reliable and innovative. Compact construction with upgradeable features allows a wide range of applications. Thanks to continuous development, we can always offer you the most innovative solutions. Let us control the material flows in your system and see yourself!



Have we piqued your interest?



PS Automation GmbH
Philipp-Krämer-Ring 13
67098 Bad Dürkheim

www.ps-automation.com
info@ps-automation.com
+49 6322 94980-0