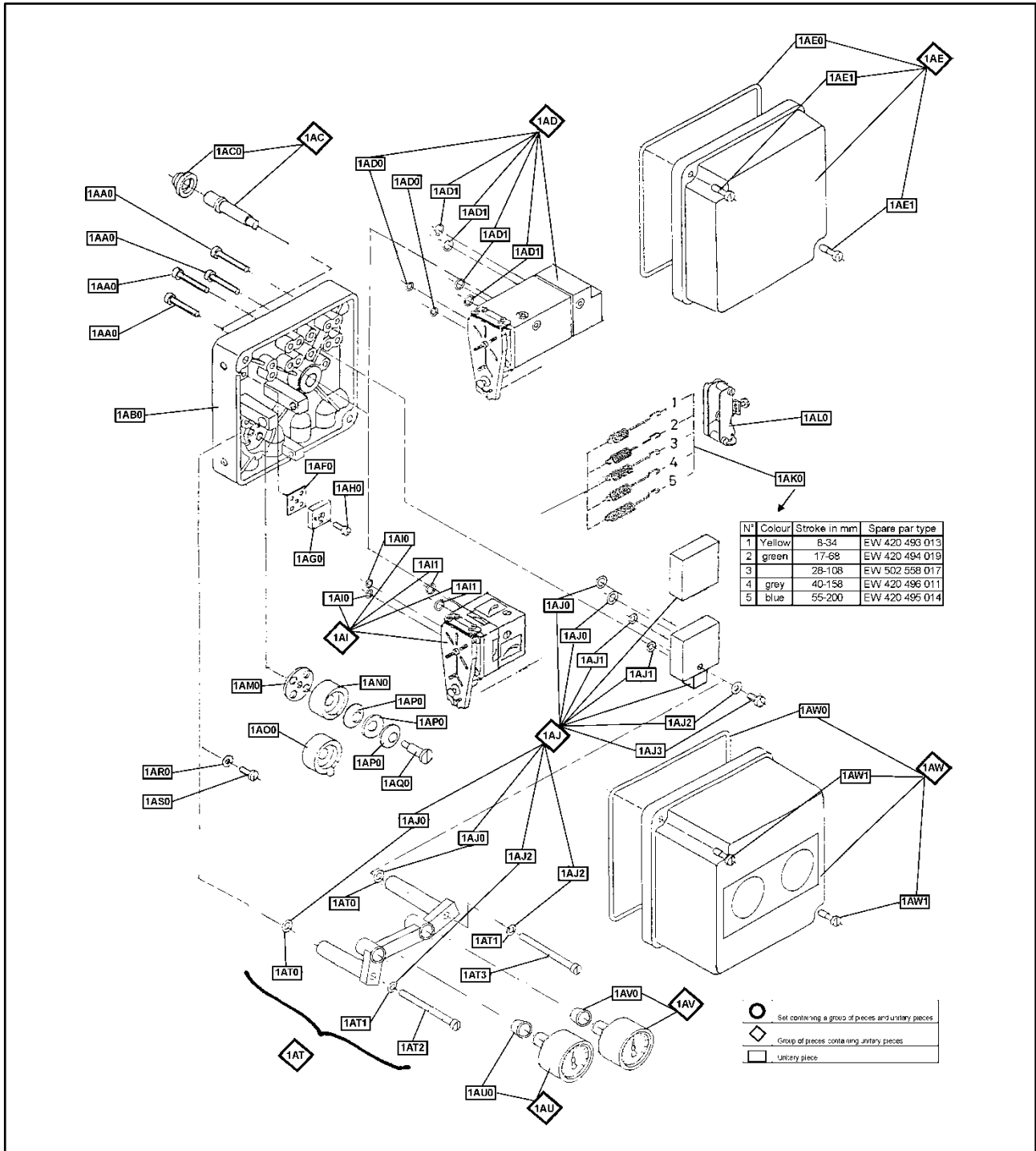


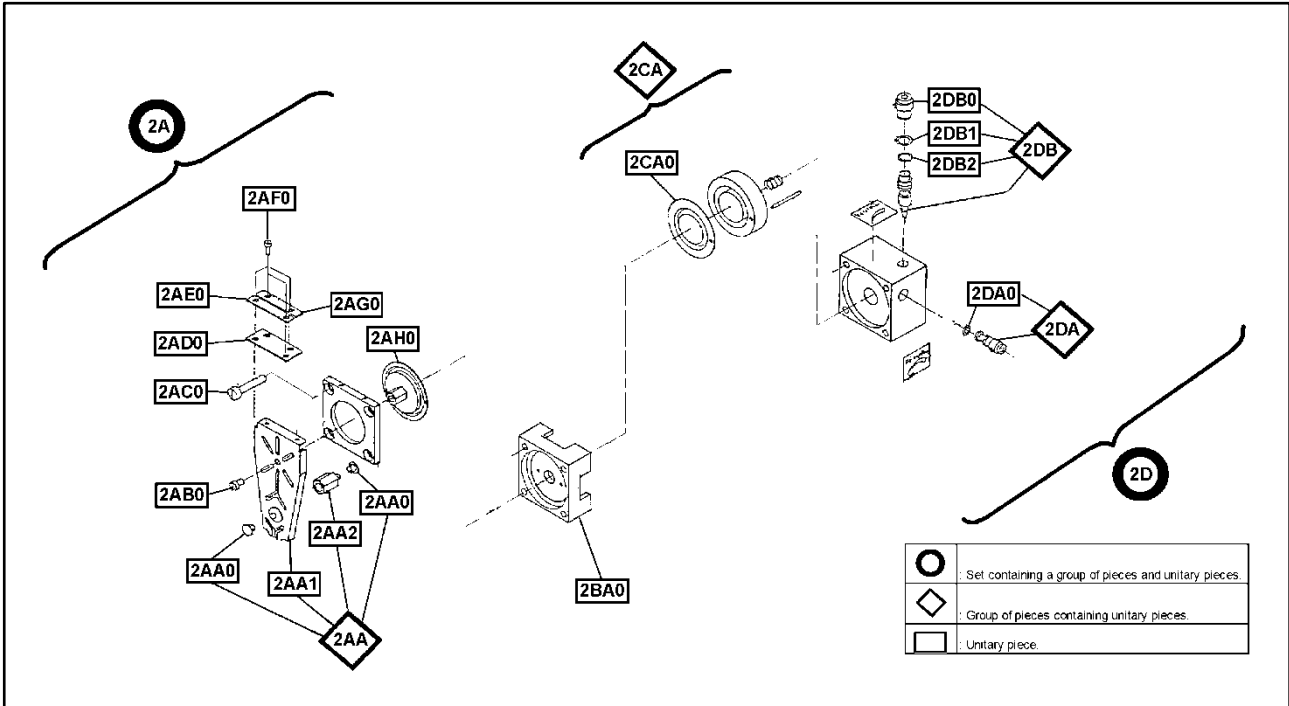
# SRP981 Pneumatic Positioner Rev 2.0

Accessories for the positioner (Fig. 1)

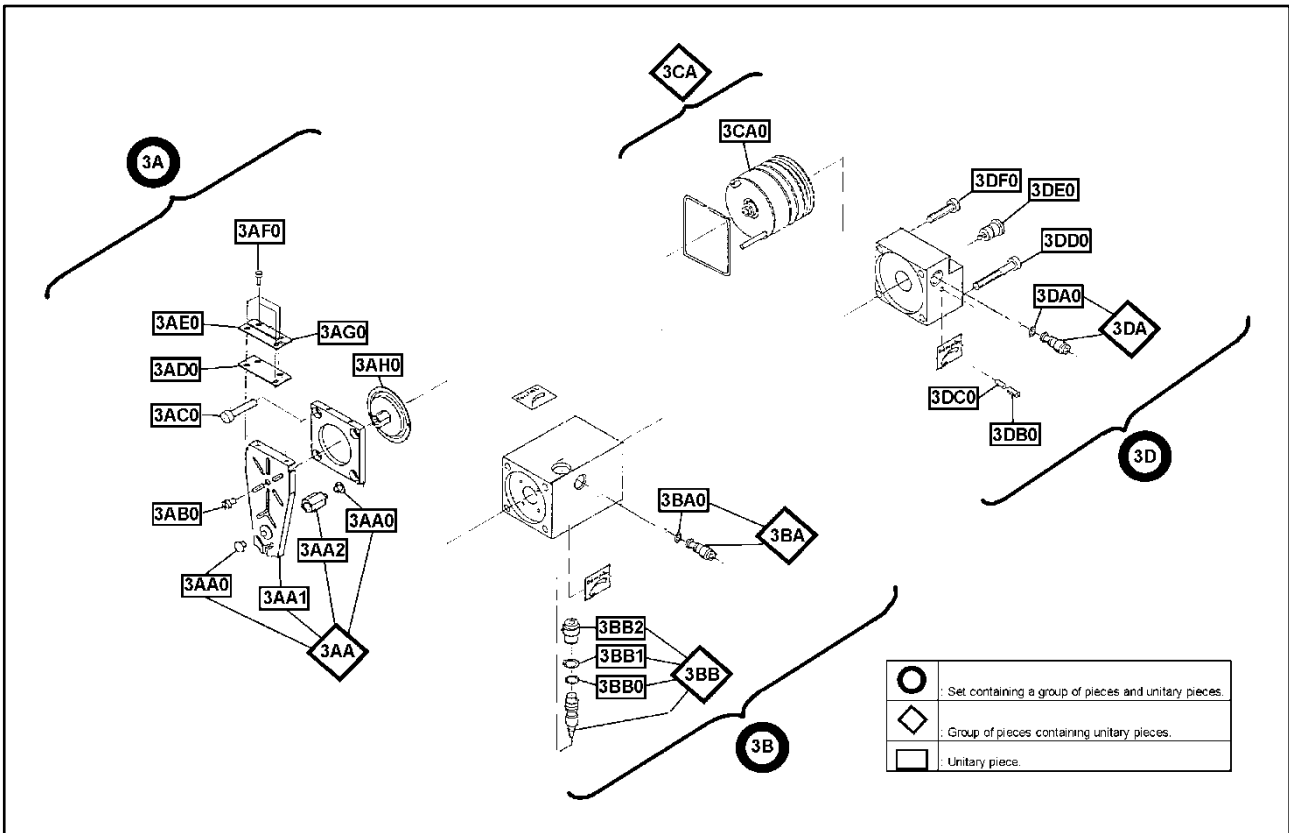




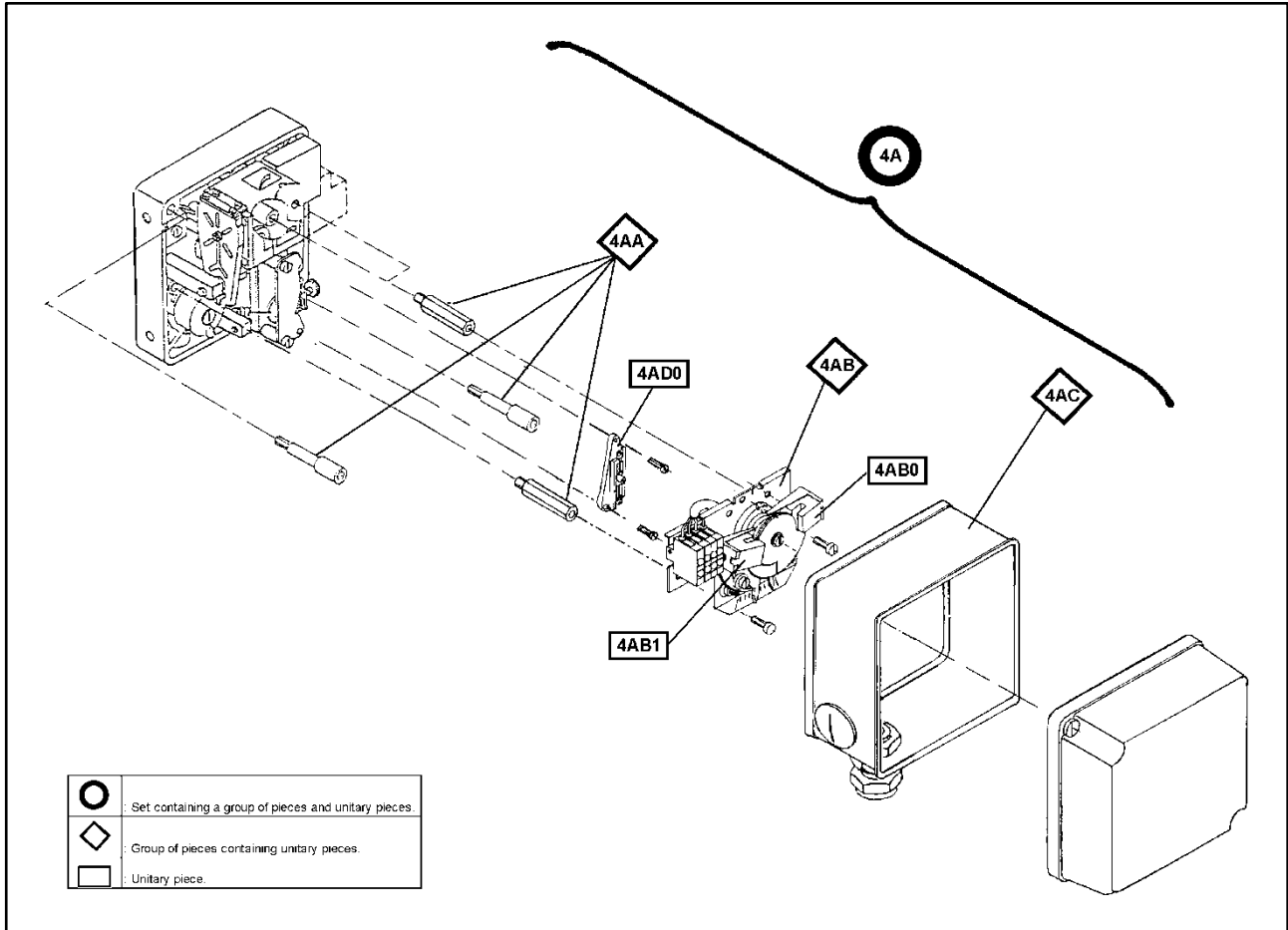
Amplifier single-acting (Fig. 2)



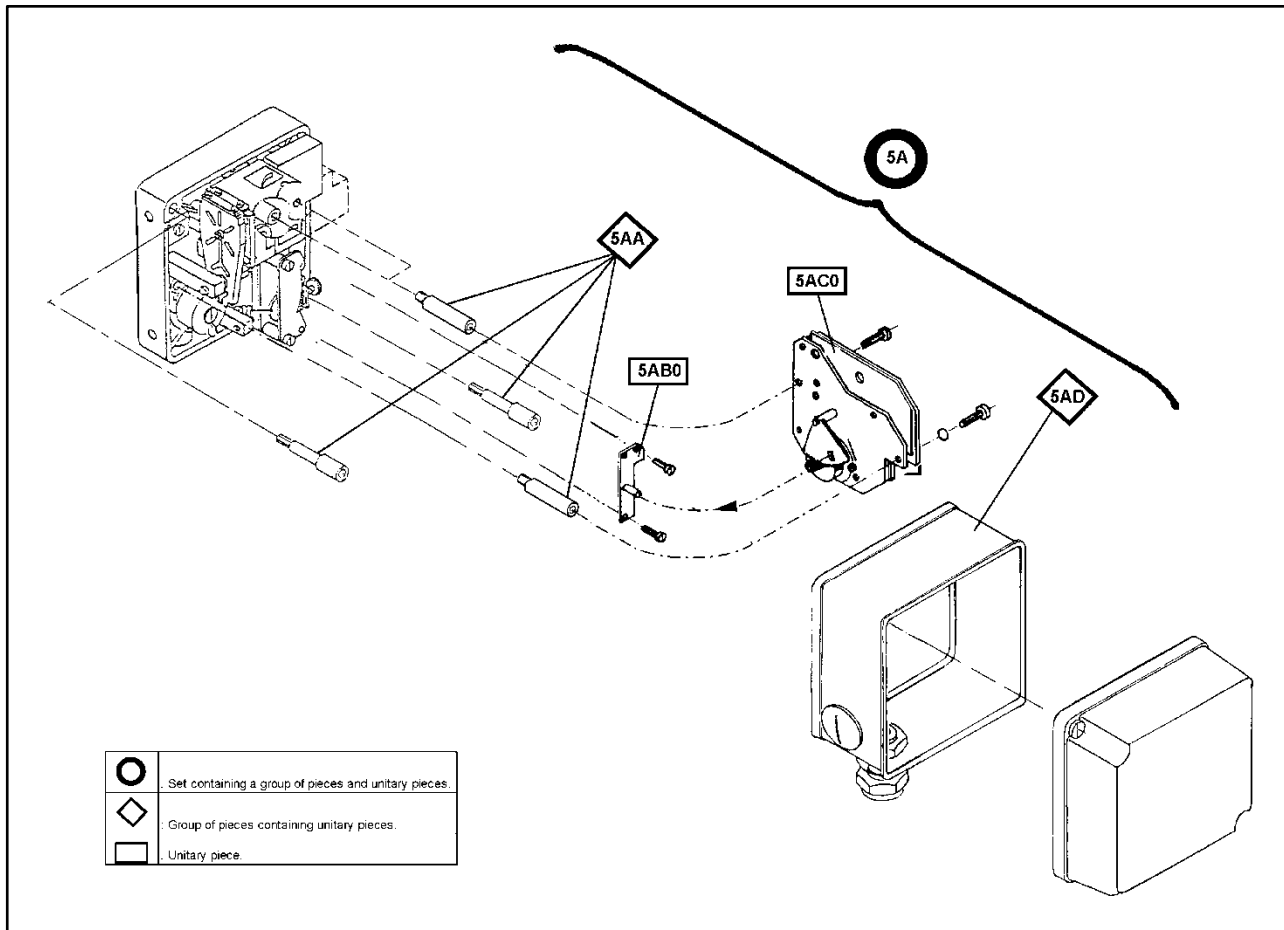
Amplifier double-acting (Fig. 3)



Limit switch assembly (Fig. 4)



**Position Transmitter (Fig. 5)**



Pos.	Number	Cnt.	Description
1AA0			<b>Screw CHC M3*20</b>
	EW 507 882 012	1	Screw CHC M3*20
1AB0			<b>Air duct plate</b>
	EW 426 267 015	1	Air duct plate
1AC			<b>Shaft</b>
	EW 426 267 024	1	Shaft
1AC0			<b>Plug (in Service Kit single / double-acting EW 426 267 112)</b>
	EW 515 885 012	1	Plug (in Service Kit single / double-acting EW 426 267 112)
1AD			<b>Amplifier double-acting</b>
	EW 411 406 312	1	Amplifier double-acting
1AD0			<b>O-ring (NBR) 2,5*1,2 (6 o-rings in Service Kit single / double-acting EW 426 267 112)</b>
	EW 502 081 055	1	O-ring (NBR) 2,5*1,2 (6 o-rings in Service Kit single / double-acting EW 426 267 112)
1AD1			<b>O-ring (NBR) 4*1,5 (4 o-rings in Service Kit single / double-acting EW 426 267 112)</b>
	EW 502 081 107	1	O-ring (NBR) 4*1,5 (4 o-rings in Service Kit single / double-acting EW 426 267 112)

Pos.	Number	Cnt.	Description
<b>1AE</b>			<b>Cover SRP 981 (standard)</b>
	EW 426 267 033	1	Cover SRP 981 (standard)
<b>1AE0</b>			<b>O-ring (NBR) 390*2,5 (in Service Kit single / double-acting EW 426 267 112)</b>
	EW 700 522 021	1	O-ring (NBR) 390*2,5 (in Service Kit single / double-acting EW 426 267 112)
<b>1AE1</b>			<b>Screw CHC M4*12 (2 screws in Service Kit single / double-acting EW 426 267 112)</b>
	EW 507 839 041	1	Screw CHC M4*12 (2 screws in Service Kit single / double-acting EW 426 267 112)
<b>1AF0</b>			<b>Gasket (in Service Kit single / double-acting EW 426 267 112)</b>
	EW 502 170 018	1	Gasket (in Service Kit single / double-acting EW 426 267 112)
<b>1AG0</b>			<b>Plate (in Service Kit single / double-acting EW 426 267 112)</b>
	EW 505 152 015	1	Plate (in Service Kit single / double-acting EW 426 267 112)
<b>1AH0</b>			<b>Screw CHC M3*8 (in Service Kit single / double-acting EW 426 267 112)</b>
	EW 507 882 449	1	Screw CHC M3*8 (in Service Kit single / double-acting EW 426 267 112)
<b>1AI</b>			<b>Amplifier single-acting</b>
	EW 411 406 019	1	Amplifier single-acting
	EW 411 406 037	1	Amplifier single-acting free of nonferrous metals
<b>1AI0</b>			<b>O-ring (NBR) 2,5*1,2 (6 o-rings in Service Kit single / double-acting EW 426 267 112)</b>
	EW 502 081 055	1	O-ring (NBR) 2,5*1,2 (6 o-rings in Service Kit single / double-acting EW 426 267 112)
<b>1AI1</b>			<b>O-ring (NBR) 4*1,5 (4 o-rings in Service Kit single / double-acting EW 426 267 112)</b>
	EW 502 081 107	1	O-ring (NBR) 4*1,5 (4 o-rings in Service Kit single / double-acting EW 426 267 112)
<b>1AJ</b>			<b>Communication air duct plate</b>
	EW 426 267 042	1	Communication air duct plate
<b>1AJ0</b>			<b>O-ring (NBR) 4*1,5 (4 o-rings in Service Kit single / double-acting EW 426 267 112)</b>
	EW 502 081 107	1	O-ring (NBR) 4*1,5 (4 o-rings in Service Kit single / double-acting EW 426 267 112)
<b>1AJ1</b>			<b>O-ring (NBR) 2,5*1,2 (6 o-rings in Service Kit single / double-acting EW 426 267 112)</b>
	EW 502 081 055	1	O-ring (NBR) 2,5*1,2 (6 o-rings in Service Kit single / double-acting EW 426 267 112)
<b>1AJ2</b>			<b>O-ring (3 o-rings in Service Kit single / double-acting EW 426 267 112)</b>
	EW 502 076 102	1	O-ring (3 o-rings in Service Kit single / double-acting EW 426 267 112)
<b>1AJ3</b>			<b>Screw CHC M4*6 (2 screws in Service Kit single / double-acting EW 426 267 112)</b>
	EW 507 882 519	1	Screw CHC M4*6 (2 screws in Service Kit single / double-acting EW 426 267 112)
<b>1AL0</b>			<b>Adjusting device</b>
	EW 411 406 091	1	Adjusting device
<b>1AM0</b>			<b>Gasket</b>
	EW 502 205 027	1	Gasket

Pos.	Number	Cnt.	Description
<b>1AN0</b>			<b>Commutator without came</b>
	EW 508 852 025	1	Commutator without came
<b>1AO0</b>			<b>Commutator with came</b>
	EW 508 852 016	1	Commutator with came
<b>1AP0</b>			<b>Spring o-ring</b>
	EW 502 318 016	1	Spring o-ring
<b>1AQ0</b>			<b>Screw</b>
	EW 507 508 011	1	Screw
<b>1AR0</b>			<b>O-ring (3 o-rings in Service Kit single / double-acting EW 426 267 112)</b>
	EW 502 076 102	1	O-ring (3 o-rings in Service Kit single / double-acting EW 426 267 112)
<b>1AS0</b>			<b>Screw CHC M4*6 (2 screws in Service Kit single / double-acting EW 426 267 112)</b>
	EW 507 882 519	1	Screw CHC M4*6 (2 screws in Service Kit single / double-acting EW 426 267 112)
<b>1AT</b>			<b>Manometer support</b>
	EW 426 267 051	1	Manometer support
<b>1AT0</b>			<b>O-ring (NBR) 2,5*1,2 (4 o-rings in Service Kit single / double-acting EW 426 267 112)</b>
	EW 502 081 107	1	O-ring (NBR) 4*1,5 (4 o-rings in Service Kit single / double-acting EW 426 267 112)
<b>1AT1</b>			<b>O-ring (3 o-rings in Service Kit single / double-acting EW 426 267 112)</b>
	EW 502 076 102	1	O-ring (3 o-rings in Service Kit single / double-acting EW 426 267 112)
<b>1AT2</b>			<b>Screw CHC M4*43</b>
	EW 507 881 017	1	Screw CHC M4*43
<b>1AT3</b>			<b>Screw CHC M4*31</b>
	EW 507 881 026	1	Screw CHC M4*31
<b>1AU</b>			<b>Manometer Ø 39</b>
	EW 411 187 116	1	Manometer Ø 39 (0-1,6bar / 0-160kpa / 0-23psi)
<b>1AU0</b>			<b>Gasket for manometer</b>
	EW 528 112 011	1	Gasket for manometer
<b>1AV</b>			<b>Manometer Ø 39</b>
	EW 411 187 091	1	Manometer Ø 39 (0-10bar / 0-1000kpa / 0-150psi)
<b>1AV0</b>			<b>Gasket for manometer</b>
	EW 528 112 011	1	Gasket for manometer
<b>1AW</b>			<b>Cover SRP 981 (for manometer)</b>
	EW 426 267 062	1	Cover SRP 981 (for manometer)
<b>1AW0</b>			<b>O-ring (NBR) 390*2,5 (in Service Kit single / double-acting EW 426 267 112)</b>
	EW 700 522 021	1	O-ring (NBR) 390*2,5 (in Service Kit single / double-acting EW 426 267 112)
<b>1AW1</b>			<b>Screw CHC M4*12 (2 screws in Service Kit single / double-acting EW 426 267 112)</b>
	EW 507 839 041	1	Screw CHC M4*12 (2 screws in Service Kit single / double-acting EW 426 267 112)
			<b>Kit "IP 65" (not illustrated)</b>
	EW 426 267 132	1	Kit "IP 65" (not illustrated)
<b>2A</b>			<b>Kit feeler level (single / double)</b>
	EW 411 406 107	1	Kit feeler level (single / double)
<b>2AA</b>			<b>Feeler lever</b>
	EW 411 406 418	1	Feeler lever

Pos.	Number	Cnt.	Description
<b>2AA0</b>			<b>Flapper platte (2 flappers platte in Service Kit single / double-acting EW 426 267 112)</b>
	EW 505 282 014	1	Flapper platte (2 flappers platte in Service Kit single / double-acting EW 426 267 112)
<b>2AA1</b>			<b>Lever</b>
	EW 401 170 014	1	Lever
<b>2AA2</b>			<b>Hexagonal nut</b>
	EW 401 849 029	1	Hexagonal nut
<b>2AB0</b>			<b>Screw CS M2,5*4</b>
	EW 508 865 498	1	Screw CS M2,5*4
<b>2AC0</b>			<b>Screw CS M3*5</b>
	EW 507 882 129	1	Screw CS M3*16
<b>2AD0</b>			<b>Leaf spring (in Service Kit single / double-acting EW 426 267 112)</b>
	EW 502 311 018	1	Leaf spring (in Service Kit single / double-acting EW 426 267 112)
<b>2AE0</b>			<b>Ledge</b>
	EW 504 149 024	1	Ledge
<b>2AF0</b>			<b>Screw CS M2*4 (4 screws platte in Service Kit single / double-acting EW 426 267 112)</b>
	EW 507 829 016	1	Screw CS M2*4 (4 screws platte in Service Kit single / double-acting EW 426 267 112)
<b>2AG0</b>			<b>Ledge</b>
	EW 504 149 015	1	Ledge
<b>2AH0</b>			<b>Diaphragm group</b>
	EW 411 406 125	1	Diaphragm group
<b>2BA0</b>			<b>Housing</b>
	EW 401 037 038	1	Housing
<b>2CA</b>			<b>Diaphragm group for amplifier single-acting</b>
	EW 411 406 116	1	Diaphragm group for amplifier single-acting
	EW 411 406 393	1	Diaphragm group for amplifier single-acting aluminium
<b>2CA0</b>			<b>Diaphragm</b>
	EW 504 233 026	1	Diaphragm
<b>2D</b>			<b>Behind housing for amplifier single-acting</b>
	EW 411 406 348	1	Behind housing for amplifier single-acting
	EW 411 406 357	1	Behind housing for amplifier single-acting aluminium
<b>2DA</b>			<b>Trotting screw with o-ring</b>
	EW 411 406 436	1	Trotting screw with o-ring
<b>2DA0</b>			<b>O-ring (NBR) 2,5*1,2 (6 o-rings in Service Kit single / double-acting EW 426 267 112)</b>
	EW 502 081 055	1	O-ring (NBR) 2,5*1,2 (6 o-rings in Service Kit single / double-acting EW 426 267 112)
<b>2DB</b>			<b>Trotting screw with o-rings</b>
	EW 411 406 445	1	Trotting screw with o-rings
<b>2DB0</b>			<b>Trotting screw incl. Service Kit single / double-acting EW 426 267 112</b>
	EW 426 267 112	1	Trotting screw incl. Service Kit single / double-acting EW 426 267 112
<b>2DB1</b>			<b>O-ring (NBR) 5*1 (1 o-ring in Service Kit single / double-acting EW 426 267 112)</b>
	EW 502 124 252	1	O-ring (NBR) 5*1 (1 o-ring in Service Kit single / double-acting EW 426 267 112)
<b>2DB2</b>			<b>O-ring (NBR) 3*1 (3 o-rings in Service Kit single / double-acting EW 426 267 112)</b>
	EW 502 081 116	1	O-ring (NBR) 3*1 (1 o-ring in Service Kit single / double-acting EW 426 267 112)



Pos.	Number	Cnt.	Description
<b>3A</b>			<b>Kit feeler level (single / double)</b>
	EW 411 406 107	1	Kit feeler level (single / double)
<b>3AA</b>			<b>Feeler lever</b>
	EW 411 406 418	1	Feeler lever
<b>3AA0</b>			<b>Flapper platte (2 flappers platte in Service Kit single / double-acting EW 426 267 112)</b>
	EW 505 282 014	1	Flapper platte (2 flappers platte in Service Kit single / double-acting EW 426 267 112)
<b>3AA1</b>			<b>Lever</b>
	EW 401 170 014	1	Lever
<b>3AA2</b>			<b>Hexagonal nut</b>
	EW 401 849 029	1	Hexagonal nut
<b>3AB0</b>			<b>Screw CS M2,5*4</b>
	EW 508 865 498	1	Screw CS M2,5*4
<b>3AC0</b>			<b>Screw CS M3*5</b>
	EW 507 882 129	1	Screw CS M3*16
<b>3AD0</b>			<b>Leaf spring (in Service Kit single / double-acting EW 426 267 112)</b>
	EW 502 311 018	1	Leaf spring (in Service Kit single / double-acting EW 426 267 112)
<b>3AE0</b>			<b>Ledge</b>
	EW 504 149 024	1	Ledge
<b>3AF0</b>			<b>Screw CS M2*4 (4 screws platte in Service Kit single / double-acting EW 426 267 112)</b>
	EW 507 829 016	1	Screw CS M2*4 (4 screws platte in Service Kit single / double-acting EW 426 267 112)
<b>3AG0</b>			<b>Ledge</b>
	EW 504 149 015	1	Ledge
<b>3AH0</b>			<b>Diaphragm group</b>
	EW 411 406 125	1	Diaphragm group
<b>3B</b>			<b>Front housing of the double-acting</b>
	EW 411 406 366	1	Front housing of the double-acting
<b>3BA</b>			<b>Trotting screw with o-ring</b>
	EW 411 406 436	1	Trotting screw with o-ring
<b>3BA0</b>			<b>O-ring (NBR) 2,5*1,2 (6 o-rings in Service Kit single / double-acting EW 426 267 112)</b>
	EW 502 081 055	1	O-ring (NBR) 2,5*1,2 (6 o-rings in Service Kit single / double-acting EW 426 267 112)
<b>3BB</b>			<b>Trotting screw with o-rings</b>
	EW 411 406 445	1	Trotting screw with o-rings
<b>3BB0</b>			<b>O-ring (NBR) 5*1 (1 o-ring in Service Kit single / double-acting EW 426 267 112)</b>
	EW 502 124 252	1	O-ring (NBR) 5*1 (1 o-ring in Service Kit single / double-acting EW 426 267 112)
<b>3BB1</b>			<b>O-ring (NBR) 3*1 (1 o-ring in Service Kit single / double-acting EW 426 267 112)</b>
	EW 502 081 116	1	O-ring (NBR) 3*1 (1 o-ring in Service Kit single / double-acting EW 426 267 112)
<b>3BB2</b>			<b>Trotting screw incl. Service Kit single / double-acting EW 426 267 112</b>
	EW 426 267 112	1	Trotting screw incl. Service Kit single / double-acting EW 426 267 112
<b>3CA</b>			<b>Diaphragm group for amplifier double-acting</b>
	EW 411 406 251	1	Diaphragm group for amplifier double-acting

Pos.	Number	Cnt.	Description
<b>3CA0</b>			<b>Diaphragm</b>
	EW 415 980 023	1	Diaphragm
<b>3D</b>			<b>Behind housing for amplifier double-acting</b>
	EW 411 406 339	1	Behind housing for amplifier double-acting
<b>3DA</b>			<b>Trotting screw with o-ring</b>
	EW 411 406 436	1	Trotting screw with o-ring
<b>3DA0</b>			<b>O-ring (NBR) 2,5*1,2 (6 o-rings in Service Kit single / double-acting EW 426 267 112)</b>
	EW 502 081 055	1	O-ring (NBR) 2,5*1,2 (6 o-rings in Service Kit single / double-acting EW 426 267 112)
<b>3DB0</b>			<b>Threaded pin M3*6</b>
	EW 527 334 011	1	Threaded pin M3*6
<b>3DC0</b>			<b>Pin</b>
	EW 522 629 015	1	Pin
<b>3DD0</b>			<b>Screw CS M3*25</b>
	EW 507 882 742	1	Screw CS M3*25
<b>3DE0</b>			<b>Sleeve</b>
	EW 415 979 038	1	Sleeve
<b>3DF0</b>			<b>Screw CS M3*16</b>
	EW 507 882 129	1	Screw CS M3*16
<b>4A</b>			<b>Kit limit switch assembly (standard)</b>
	EW 419 510 334	1	Kit limit switch assembly standard version
	EW 419 510 352	1	Kit limit switch assembly security version
	EW 419 510 291	1	Kit limit switch assembly Three-Wire Technique
	EW 420 421 017	1	Kit limit switch assembly with two Micro Switches
<b>4AA</b>			<b>Pilar for limit switch assembly</b>
	EW 426 267 071	1	Pilar for limit switch assembly for the single-acting
	EW 426 267 089	1	Pilar for limit switch assembly for the double-acting
<b>4AB</b>			<b>Limit switch assembly</b>
	EW 419 495 041	1	Limit switch assembly standard version
	EW 419 495 059	1	Limit switch assembly security version
	EW 419 495 032	1	Limit switch assembly Three-Wire Technique
	EW 420 422 012	1	Limit switch assembly with two Micro Switches
<b>4AB0</b>			<b>Contact</b>
	EW 414 920 027	1	Contact standard version
	EW 414 638 021	1	Contact security version
	EW 530 115 012	1	Contact Three-Wire Technique
	EW 420 420 022	1	Contact Micro Switch
<b>4AB1</b>			<b>Contact</b>
	EW 414 920 027	1	Contact standard version
	EW 414 638 021	1	Contact security version
	EW 530 115 012	1	Contact Three-Wire Technique
	EW 420 420 011	1	Contact Micro Switch
<b>4AC</b>			<b>Cover</b>
	EW 426 267 121	1	Cover
<b>4AD0</b>			<b>Kit adjusting</b>
	EW 419 340 019	1	Kit adjusting
<b>5A</b>			<b>Position Transmitter Kit</b>
	EW 420 661 115	1	Position Transmitter Kit
<b>5AA</b>			<b>Pilar for limit Position Transmitter</b>
	EW 426 267 098	1	Pilar for limit Position Transmitter for the single-acting
	EW 426 267 103	1	Pilar for limit Position Transmitter for the double acting
<b>5AB0</b>			<b>Adjusting plate</b>
	EW 420 662 013	1	Adjusting plate

---

<b>Pos. Number</b>	<b>Cnt.</b>	<b>Description</b>
<b>5AC0</b>		<b>Position Transmitter</b>
EW 420 664 052	1	Position Transmitter
<b>5AD</b>		<b>Cover</b>
EW 426 267 121	1	Cover

**Important notices:**

For spare parts supplies for devices with certification resp. for supply of spare parts with certification we only warrant that the supplied spare part in its delivery condition is suitable for the certification as indicated by purchaser.

Validity of a certification generally becomes effective after orderly assembly to the complete device. Herefore, we do not assume any guarantee.

For the repair and change of explosionproof devices, the national regulations have to be observed.

Indicate complete model code of original device as far as possible when ordering spare parts. Only valid model code combinations are allowed.

Indicate complete model code of original device as far as possible when ordering spare parts. Only valid model code combinations are allowed.

Subject to alterations - reprinting, copying and translation prohibited. Products and publications are normally quoted without reference to existing patents, registered utility models or trademarks. The lack of any such reference does not justify the assumption that a product or symbol is free.

Foxboro  
Postfach 50 03 47  
D-70333 Stuttgart  
Tel. # 49 (0)711 502-0  
Fax # 49 (0)711 502-597

Life Is On

**Foxboro**  
by Schneider Electric